

CONTRIBUTORS

Philip Murphy, CFA
Vice President
North American Equity Indices
philip.murphy@spglobal.com

A. Silvia Kitchener
Associate Director
Equity Indices
silvia.kitchener@spglobal.com

S&P Target Date Scorecard

SUMMARY

- The S&P Target Date[®] Scorecard provides performance comparisons, equal- and asset-weighted category averages, and analytics covering the target date fund (TDF) universe.
- Past performance of the “Through” glide path category, as represented by the S&P Target Date Through benchmarks, is significantly different from that of the “To” category, as represented by the S&P Target Date To benchmarks. This is because of generally higher equity allocations within the Through TDFs. Report 4 shows the difference in three-year annualized total returns between the To and Through benchmarks, by vintage. The maximum difference of 0.81% occurred in the 2035 vintage, while the minimum was in 2060+.
- In most cases, the scorecard shows that asset-weighted average TDF returns are generally higher than equal-weighted returns over three- and five-year time horizons. However, over the shorter term (one-year period), equal-weighted returns outperformed the asset-weighted TDF returns in 8 out of the 12 TDFs. While some larger TDFs earned relatively higher returns than some of their smaller counterparts, causing the asset-weighted funds to outperform the equal-weighted funds, we see that the landscape may be changing.
- The S&P Target Date Index series is a representative benchmark for TDFs. The series is used extensively throughout the report and distinguishes itself from peer group statistics because it is investable, comprises consensus-derived asset allocation weights, and its composition is known in advance of evaluation periods.
- The S&P Target Date To and Through Indices offer stakeholders style-specific measures of the two prominent approaches to glide path management within the TDF universe. These indices may be appropriate for those seeking a tighter-fitting TDF benchmark than one covering the entire industry.
- Underlying data is obtained from the Morningstar[®] U.S. Open-End Fund Database. The S&P Target Date Scorecard is published semiannually.

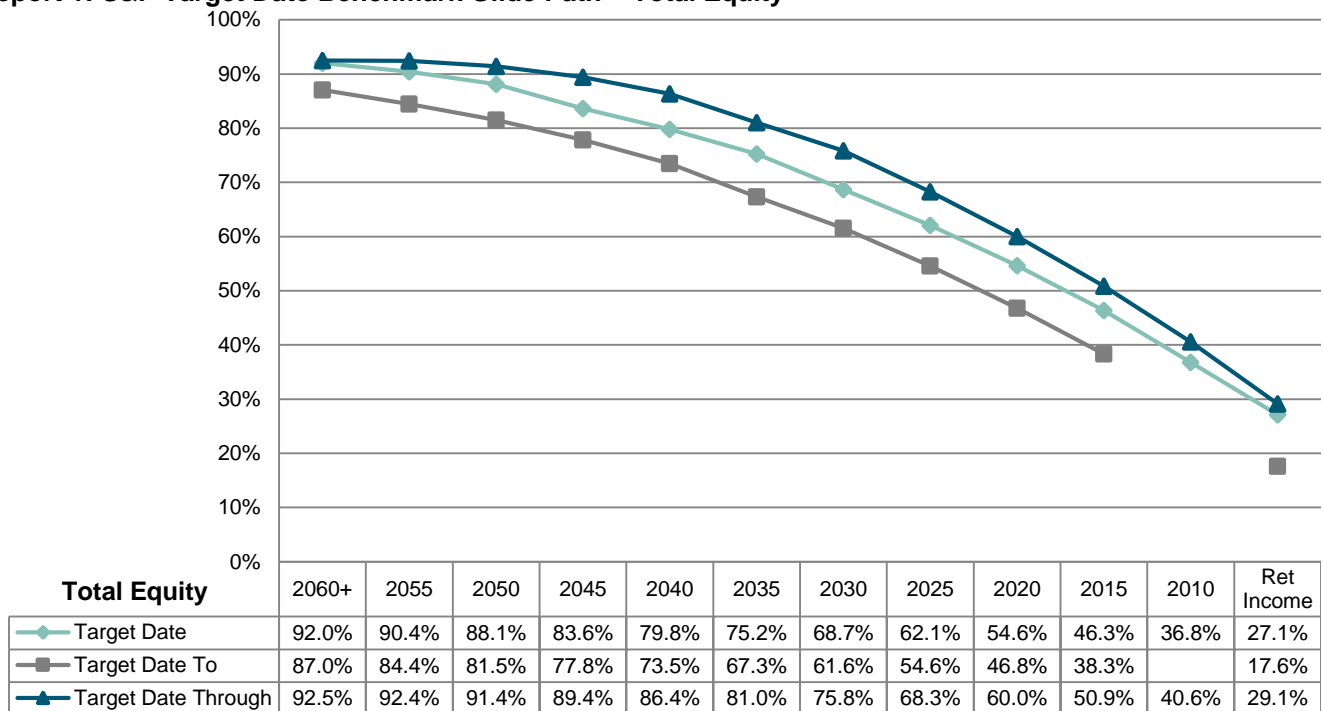
A UNIQUE SCORECARD FOR THE TARGET DATE UNIVERSE

The S&P Target Date Scorecard presents the performance of TDFs as compared to appropriate benchmark indices. We consider all target date asset allocation policies to be active decisions, so we include funds that use passive underlying investments as well as active underlying investments. The scorecard covers target dates from retirement income to 2060 and beyond, and it has the following unique features.

- **A Representative Target Date Benchmark:** The S&P Target Date Index¹ is the only consensus-driven target date benchmark offered by an independent index provider. Its asset class exposure and glide path are functions of market observations acquired from an annual survey of target date managers. The index currently includes target dates from retirement income through 2060+. The S&P Target Date To Retirement Income and the S&P Target Date Through Retirement Income series were launched in January 2015, and their performance will be incorporated into the scorecard once they have accumulated sufficient history.
- **Apples-to-Apples Comparison:** Target date fund returns are sometimes compared to popular asset class benchmarks such as the S&P 500® or Bloomberg Barclays U.S. Aggregate Bond Index®. The S&P Target Date Scorecard avoids this pitfall by measuring a fund's returns against the returns of the benchmark that is most appropriate for each target date category.
- **Asset Allocation Risk Revealed:** Sometimes custom, multi-asset class benchmarks are used for comparison purposes. However, these benchmarks do not measure asset allocation risk, as they are typically set with asset class exposure selected by fund managers. They also may lack transparency with respect to the method behind their calculation and may not be adjusted for changes in asset allocation policy over time. The report avoids these problems by referencing our consensus-driven target date benchmark that provides a representative proxy of asset allocation risk for each target date vintage.
- **Asset-Weighted Returns:** Average returns for a fund group are often calculated using only equal weighting, which results in the returns of a USD 10 billion fund affecting the average in the same manner as the returns of a USD 10 million fund. An accurate representation of how market participants fared in a particular period can be better ascertained by calculating weighted-average returns, in which each fund's return is weighted by net assets. The S&P Target Date Scorecard shows both equal- and asset-weighted averages. Additionally, we now use all share classes to calculate average TDF returns and performance quartiles.
- **Data Cleaning:** Appropriate peer groups are built from underlying databases so meaningful benchmark comparisons may be performed. TDFs with vintages of 2060 or beyond are compared with the S&P Target Date 2060+ Index. TDFs with vintages that have already passed, such as 2005, are compared with the S&P Target Date Retirement Income Index. Average TDF returns, both equal-weighted and asset-weighted, are calculated using all share classes within each fund family in order to represent the aggregate experience of TDF shareholders. The S&P Target Date Scorecard offers the only comprehensive, periodic, and publicly available source of such data. Reports are available at www.spdji.com.

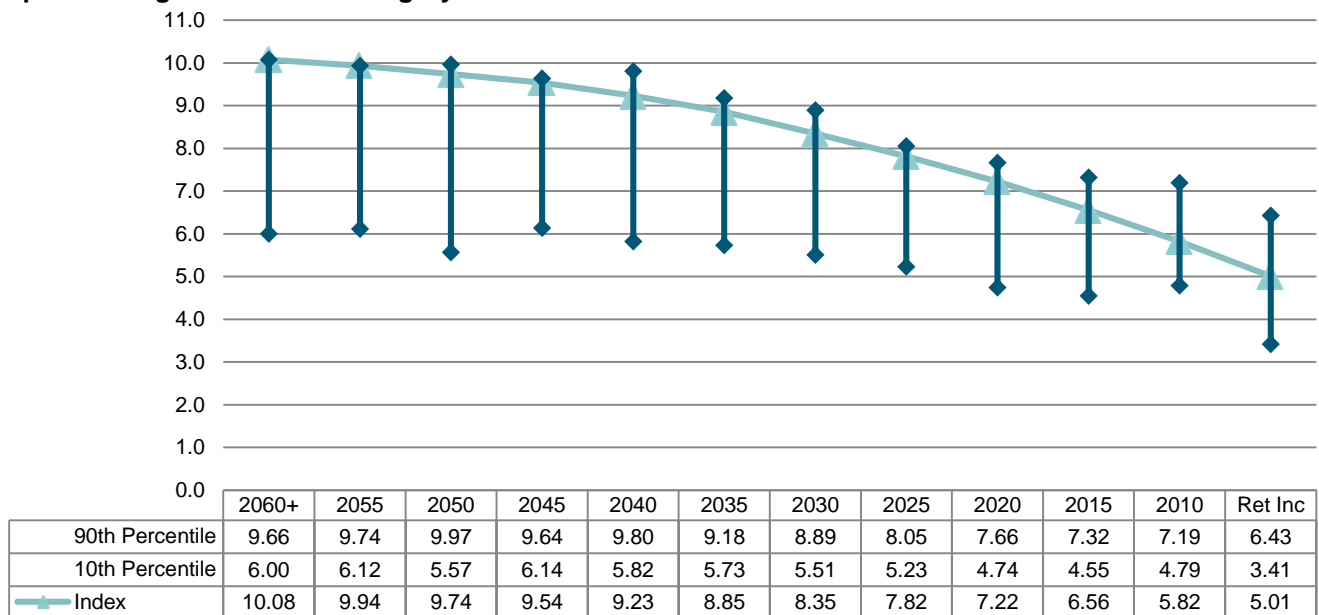
¹ It is not possible to invest directly in an index. Indices are statistical composites and their returns do not include payment of any sales charges or fees an investor would pay to purchase the securities they represent. Such costs would lower performance.

Report 1: S&P Target Date Benchmark Glide Path – Total Equity



Source: S&P Dow Jones Indices LLC, Morningstar Direct. Data as of May 31, 2016. Chart is provided for illustrative purposes. Past performance is no guarantee of future results. The S&P Target Date To 2010 was discontinued effective June 5, 2016.

Report 2: Target Date Fund Category Performance – One Year



Source: S&P Dow Jones Indices LLC, Morningstar Direct. Data as of Dec. 30, 2016. Chart is provided for illustrative purposes. Past performance is no guarantee of future results.

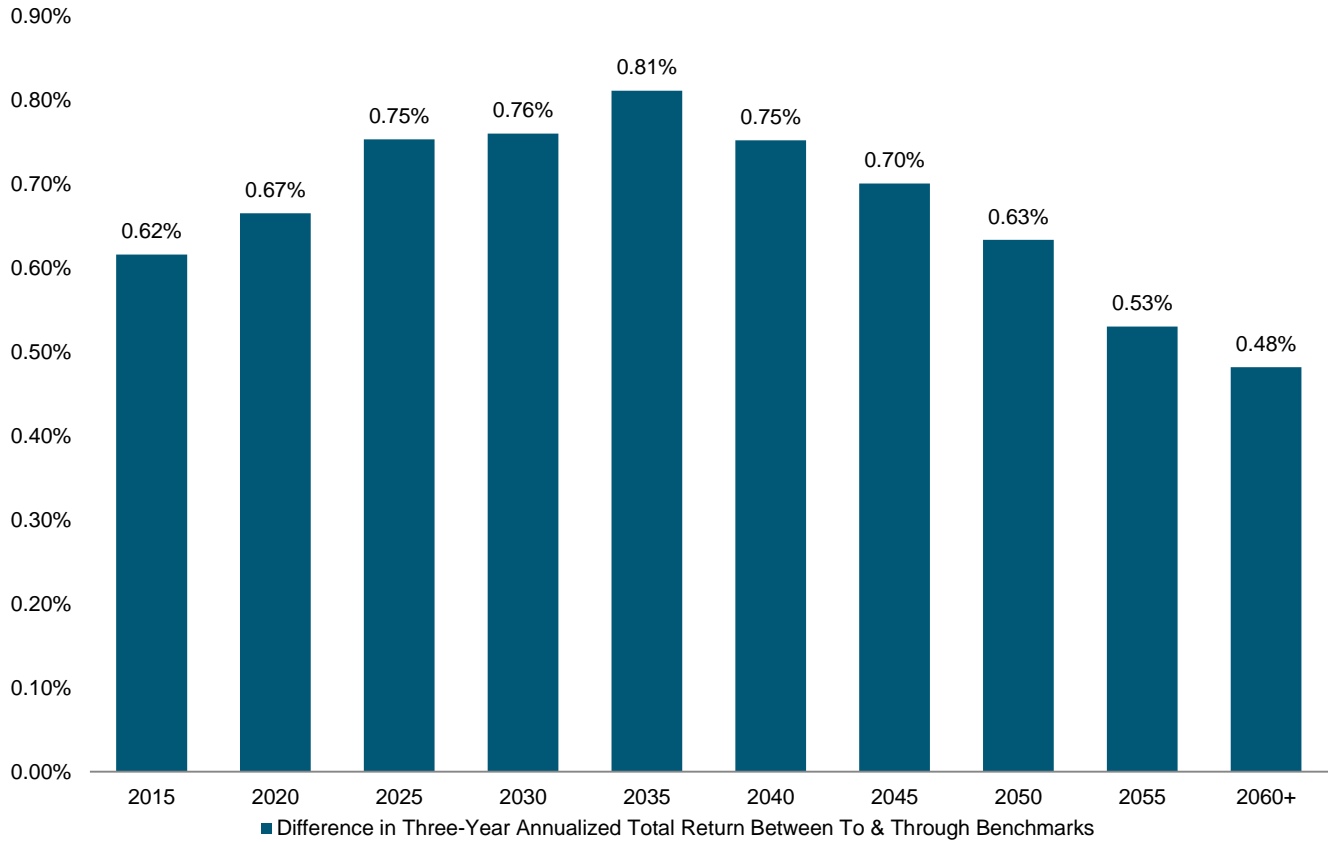
| Report 3: Average Target Date Fund Performance | | | |
|---|---------------------|----------------------------------|---------------------------------|
| CATEGORY | ONE-YEAR (%) | THREE-YEAR ANNUALIZED (%) | FIVE-YEAR ANNUALIZED (%) |
| Ret. Income TDFs (ew) | 5.09 | 2.62 | 4.37 |
| Ret. Income TDFs (aw) | 4.90 | 2.75 | 4.32 |
| S&P Target Date Ret. Income | 5.01 | 3.20 | 4.66 |
| S&P Target Date To Ret. Income | 3.96 | N/A | N/A |
| S&P Target Date Through Ret. Income | 5.17 | N/A | N/A |
| 2010 TDFs (ew) | 5.87 | 3.10 | 5.79 |
| 2010 TDFs (aw) | 6.21 | 3.35 | 6.17 |
| S&P Target Date 2010 | 5.82 | 3.52 | 5.75 |
| S&P Target Date To 2010 | N/A | N/A | N/A |
| S&P Target Date Through 2010 | 6.17 | 3.71 | 6.50 |
| 2015 TDFs (ew) | 6.14 | 3.17 | 6.49 |
| 2015 TDFs (aw) | 6.46 | 3.63 | 7.03 |
| S&P Target Date 2015 | 6.56 | 3.92 | 6.79 |
| S&P Target Date To 2015 | 5.81 | 3.49 | 5.67 |
| S&P Target Date Through 2015 | 7.05 | 4.10 | 7.57 |
| 2020 TDFs (ew) | 6.22 | 3.24 | 6.64 |
| 2020 TDFs (aw) | 6.33 | 3.61 | 7.54 |
| S&P Target Date 2020 | 7.22 | 4.18 | 7.66 |
| S&P Target Date To 2020 | 6.52 | 3.72 | 6.49 |
| S&P Target Date Through 2020 | 7.83 | 4.38 | 8.49 |
| 2025 TDFs (ew) | 6.73 | 3.47 | 7.81 |
| 2025 TDFs (aw) | 6.77 | 3.92 | 8.61 |
| S&P Target Date 2025 | 7.82 | 4.32 | 8.37 |
| S&P Target Date To 2025 | 7.17 | 3.92 | 7.24 |
| S&P Target Date Through 2025 | 8.48 | 4.67 | 9.34 |
| 2030 TDFs (ew) | 7.34 | 3.65 | 8.27 |
| 2030 TDFs (aw) | 6.94 | 3.92 | 9.05 |
| S&P Target Date 2030 | 8.35 | 4.50 | 9.05 |
| S&P Target Date To 2030 | 7.75 | 4.09 | 7.96 |
| S&P Target Date Through 2030 | 9.08 | 4.85 | 9.94 |
| 2035 TDFs (ew) | 7.58 | 3.74 | 9.12 |
| 2035 TDFs (aw) | 7.38 | 4.19 | 9.84 |
| S&P Target Date 2035 | 8.85 | 4.66 | 9.59 |
| S&P Target Date To 2035 | 8.27 | 4.19 | 8.55 |
| S&P Target Date Through 2035 | 9.48 | 5.00 | 10.38 |

Source: S&P Dow Jones Indices LLC, Morningstar Direct. Data as of Dec. 30, 2016. "ew" indicates equal weighted. "aw" represents asset weighted. Table is provided for illustrative purposes. Past performance is no guarantee of future results. See Glossary for more information.

| Report 3: Average Target Date Fund Performance (cont.) | | | |
|---|---------------------|----------------------------------|---------------------------------|
| CATEGORY | ONE-YEAR (%) | THREE-YEAR ANNUALIZED (%) | FIVE-YEAR ANNUALIZED (%) |
| 2040 TDFs (ew) | 7.96 | 3.86 | 9.16 |
| 2040 TDFs (aw) | 7.36 | 4.05 | 9.87 |
| S&P Target Date 2040 | 9.23 | 4.76 | 10.00 |
| S&P Target Date To 2040 | 8.77 | 4.32 | 9.10 |
| S&P Target Date Through 2040 | 9.80 | 5.07 | 10.66 |
| 2045 TDFs (ew) | 7.93 | 3.87 | 9.68 |
| 2045 TDFs (aw) | 7.68 | 4.29 | 10.21 |
| S&P Target Date 2045 | 9.54 | 4.83 | 10.31 |
| S&P Target Date To 2045 | 9.14 | 4.40 | 9.57 |
| S&P Target Date Through 2045 | 10.04 | 5.10 | 10.84 |
| 2050 TDFs (ew) | 8.23 | 4.00 | 9.53 |
| 2050 TDFs (aw) | 7.51 | 4.14 | 10.11 |
| S&P Target Date 2050 | 9.74 | 4.90 | 10.60 |
| S&P Target Date To 2050 | 9.43 | 4.46 | 9.99 |
| S&P Target Date Through 2050 | 10.19 | 5.09 | 10.94 |
| 2055 TDFs (ew) | 7.99 | 3.92 | 9.90 |
| 2055 TDFs (aw) | 7.74 | 4.37 | 10.51 |
| S&P Target Date 2055 | 9.94 | 4.92 | 10.82 |
| S&P Target Date To 2055 | 9.63 | 4.52 | 10.33 |
| S&P Target Date Through 2055 | 10.24 | 5.05 | 10.98 |
| 2060+ TDFs (ew) | 7.80 | 4.08 | N/A |
| 2060+ TDFs (aw) | 7.56 | 4.34 | N/A |
| S&P Target Date 2060+ | 10.08 | 6.21 | 10.82 |
| S&P Target Date To 2060+ | 10.24 | 5.85 | 10.38 |
| S&P Target Date Through 2060+ | 9.89 | 6.33 | 10.98 |

Source: S&P Dow Jones Indices LLC, Morningstar Direct. Data as of Dec. 30, 2016. "ew" indicates equal weighted. "aw" represents asset weighted. Table is provided for illustrative purposes. Past performance is no guarantee of future results. See Glossary for more information.

Report 4: Difference in Three-Year Total Return Between To and Through Indices by Vintage

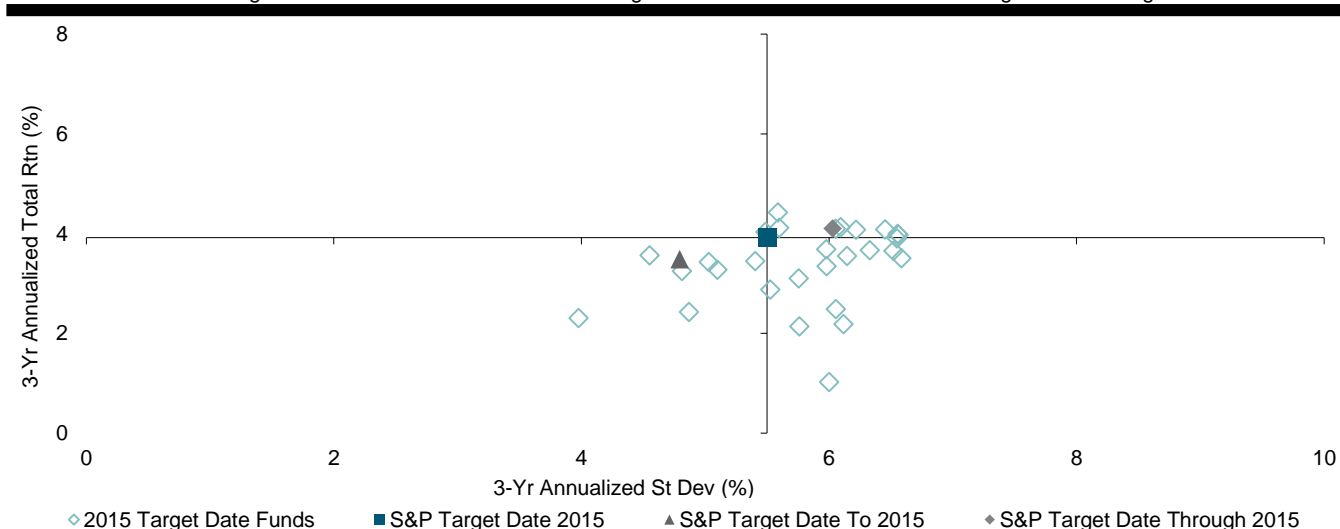
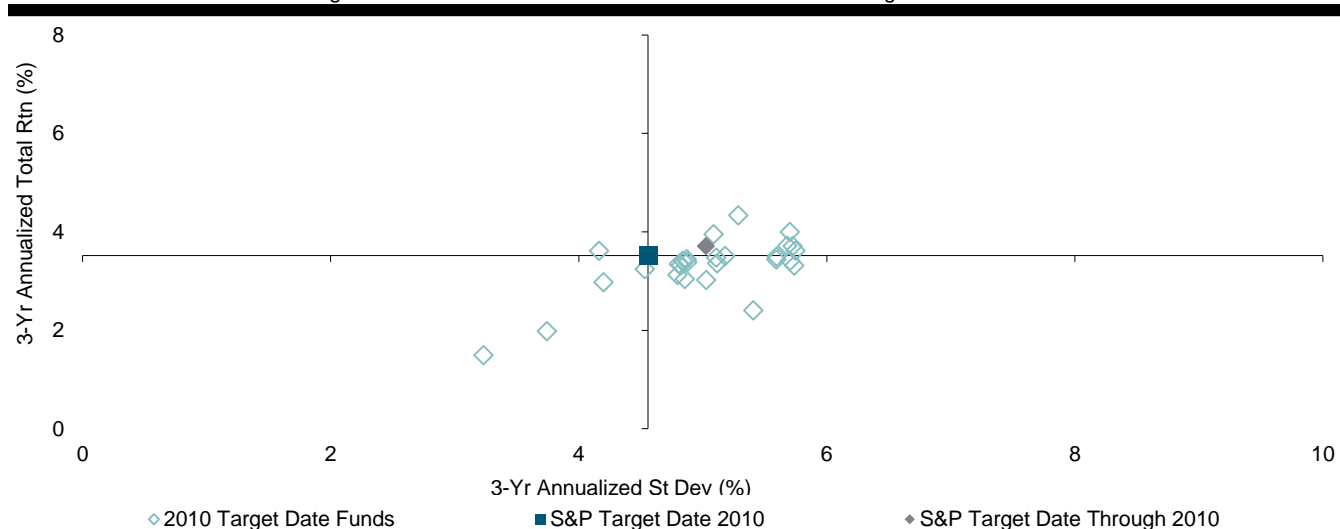
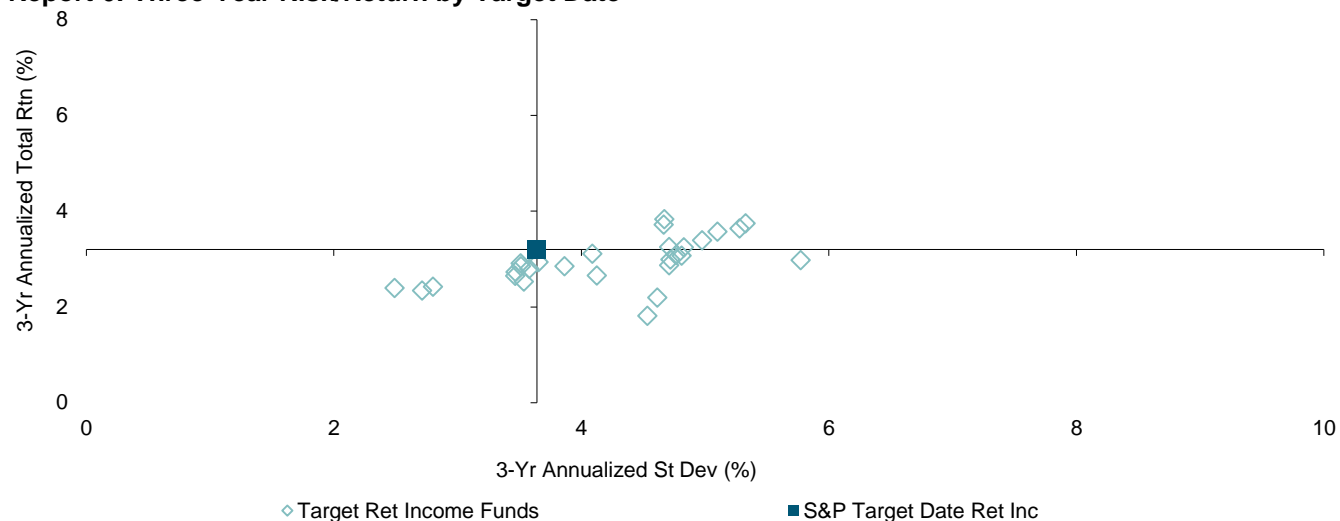


Source: S&P Dow Jones Indices LLC, Morningstar Direct. Data as of Dec. 30, 2016. Chart is provided for illustrative purposes. Past performance is no guarantee of future results.

| Report 5: Quartile Breakpoints of Target Date Funds | | | |
|--|-----------------------|------------------------|-----------------------|
| FUND CATEGORY | THIRD QUARTILE | SECOND QUARTILE | FIRST QUARTILE |
| ONE-YEAR | | | |
| Ret. Income | 4.49 | 5.06 | 5.72 |
| Target 2010 | 5.32 | 5.98 | 6.58 |
| Target 2015 | 5.42 | 6.29 | 6.97 |
| Target 2020 | 5.44 | 6.31 | 7.04 |
| Target 2025 | 6.19 | 6.91 | 7.51 |
| Target 2030 | 6.47 | 7.32 | 8.12 |
| Target 2035 | 6.87 | 7.77 | 8.51 |
| Target 2040 | 6.94 | 7.95 | 8.75 |
| Target 2045 | 7.12 | 8.14 | 9.04 |
| Target 2050 | 7.11 | 8.15 | 9.12 |
| Target 2055 | 7.17 | 8.20 | 9.09 |
| Target 2060+ | 7.14 | 7.86 | 8.70 |
| THREE-YEAR | | | |
| Ret. Income | 2.19 | 2.64 | 3.06 |
| Target 2010 | 2.75 | 3.22 | 3.50 |
| Target 2015 | 2.56 | 3.36 | 3.77 |
| Target 2020 | 2.67 | 3.32 | 3.83 |
| Target 2025 | 2.90 | 3.56 | 3.98 |
| Target 2030 | 3.11 | 3.75 | 4.19 |
| Target 2035 | 3.21 | 3.85 | 4.29 |
| Target 2040 | 3.25 | 4.00 | 4.42 |
| Target 2045 | 3.31 | 4.07 | 4.38 |
| Target 2050 | 3.28 | 4.09 | 4.65 |
| Target 2055 | 3.48 | 4.06 | 4.52 |
| Target 2060+ | 2.98 | 3.23 | 3.36 |
| FIVE-YEAR | | | |
| Ret. Income | 3.67 | 4.37 | 5.16 |
| Target 2010 | 5.41 | 6.04 | 6.55 |
| Target 2015 | 6.02 | 6.74 | 7.32 |
| Target 2020 | 5.71 | 6.85 | 7.72 |
| Target 2025 | 6.87 | 7.89 | 8.73 |
| Target 2030 | 7.46 | 8.50 | 9.30 |
| Target 2035 | 8.41 | 9.05 | 10.09 |
| Target 2040 | 8.64 | 9.38 | 10.19 |
| Target 2045 | 9.21 | 9.79 | 10.35 |
| Target 2050 | 9.15 | 9.83 | 10.33 |
| Target 2055 | 9.51 | 10.09 | 10.71 |
| Target 2060+ | N/A | N/A | N/A |

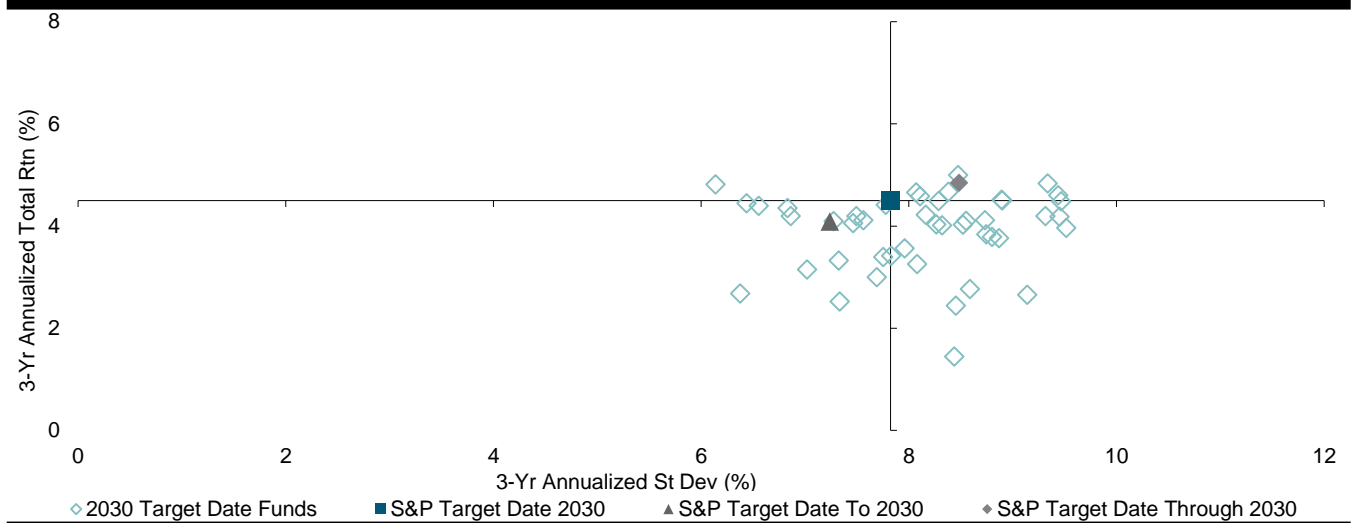
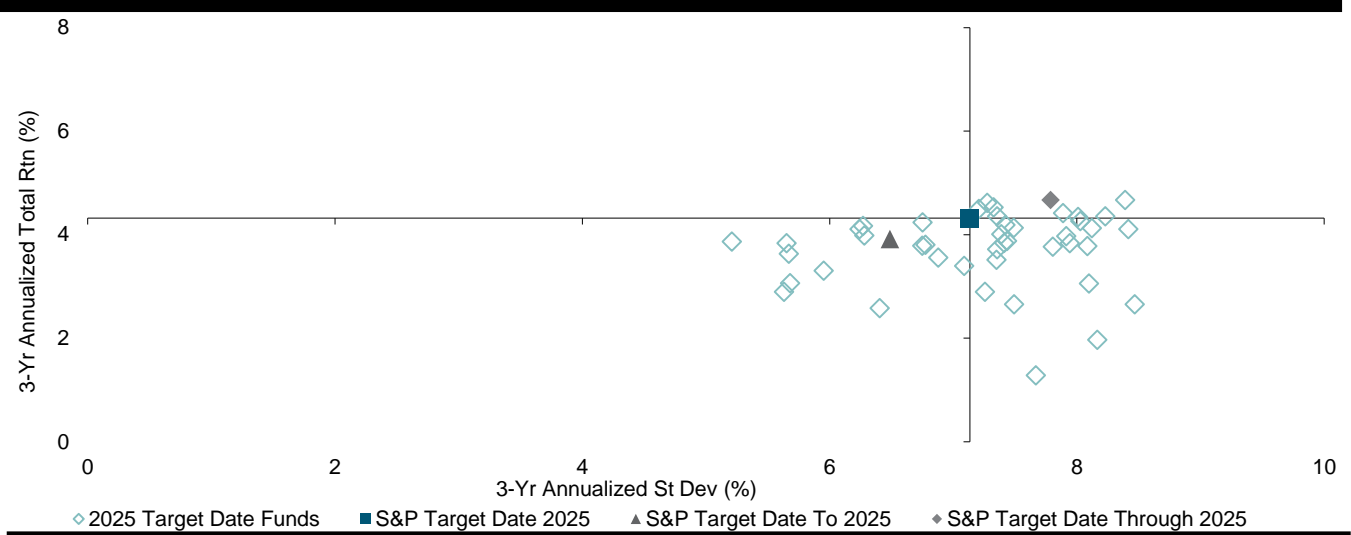
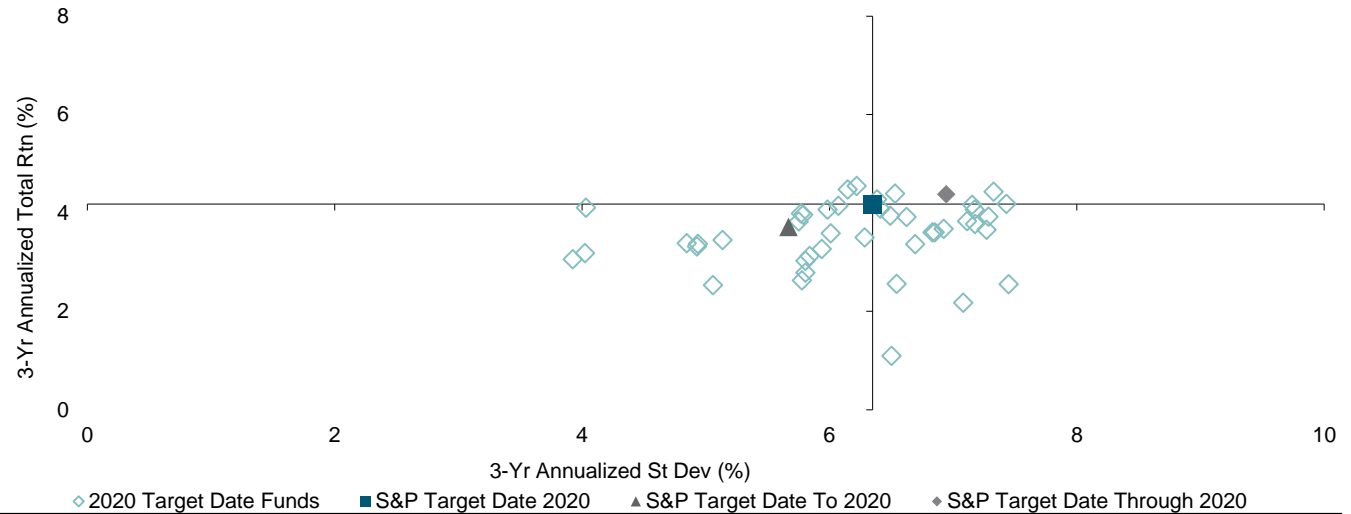
Source: S&P Dow Jones Indices LLC, Morningstar Direct. Data as of Dec. 30, 2016. Table is provided for illustrative purposes. Past performance is no guarantee of future results.

Report 6: Three-Year Risk/Return by Target Date



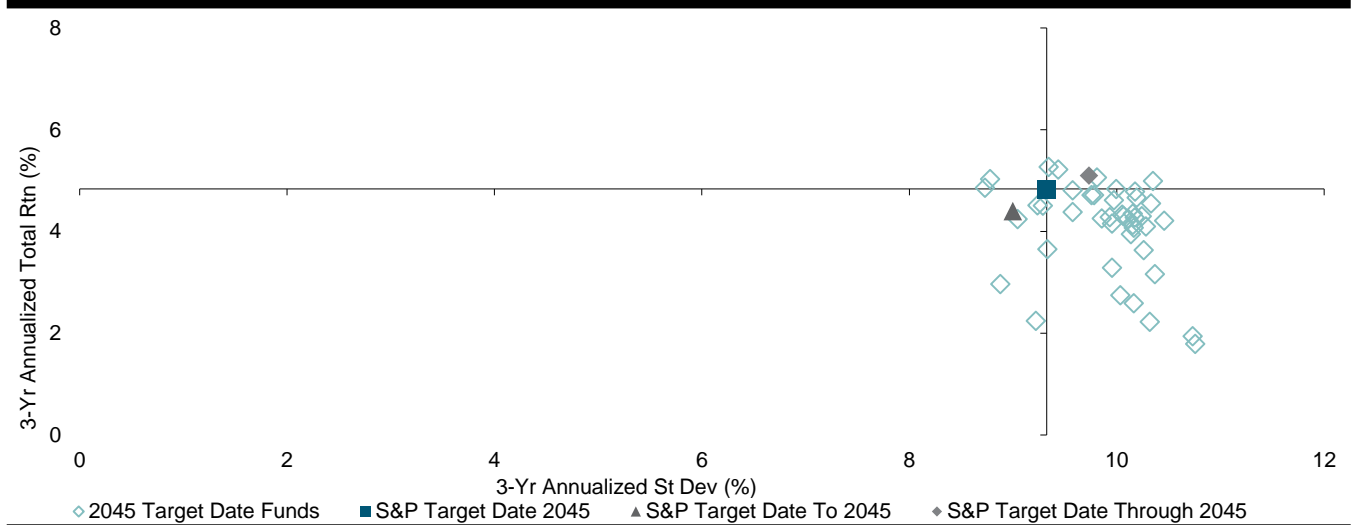
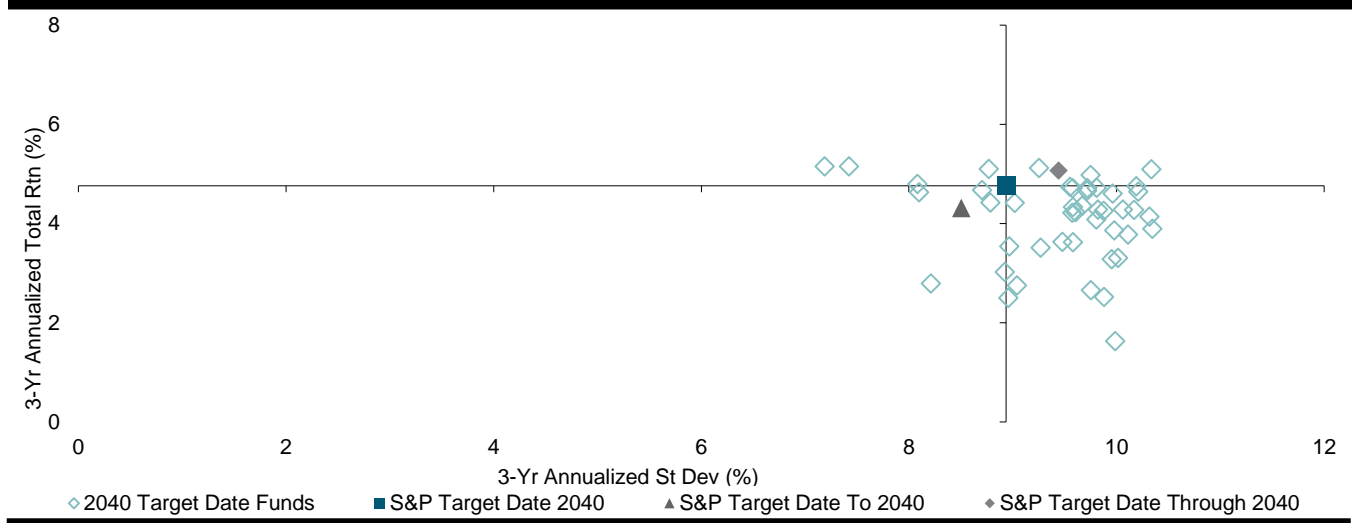
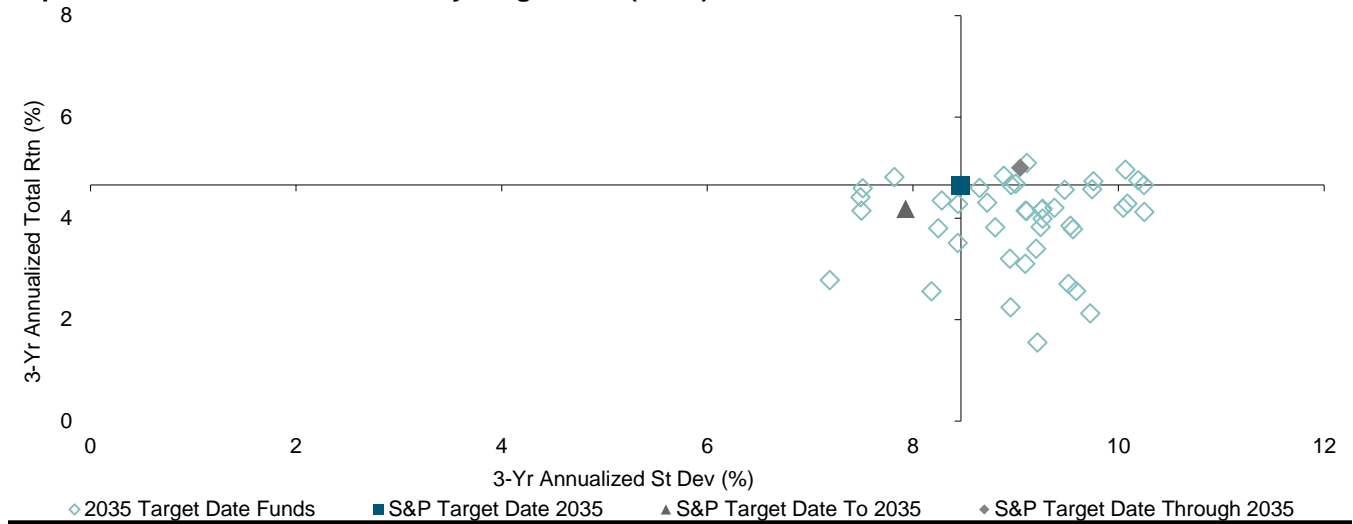
Source: S&P Dow Jones Indices LLC, Morningstar Direct. Data as of Dec. 30, 2016. Charts are provided for illustrative purposes. Past performance is no guarantee of future results.

Report 6: Three-Year Risk/Return by Target Date (cont.)



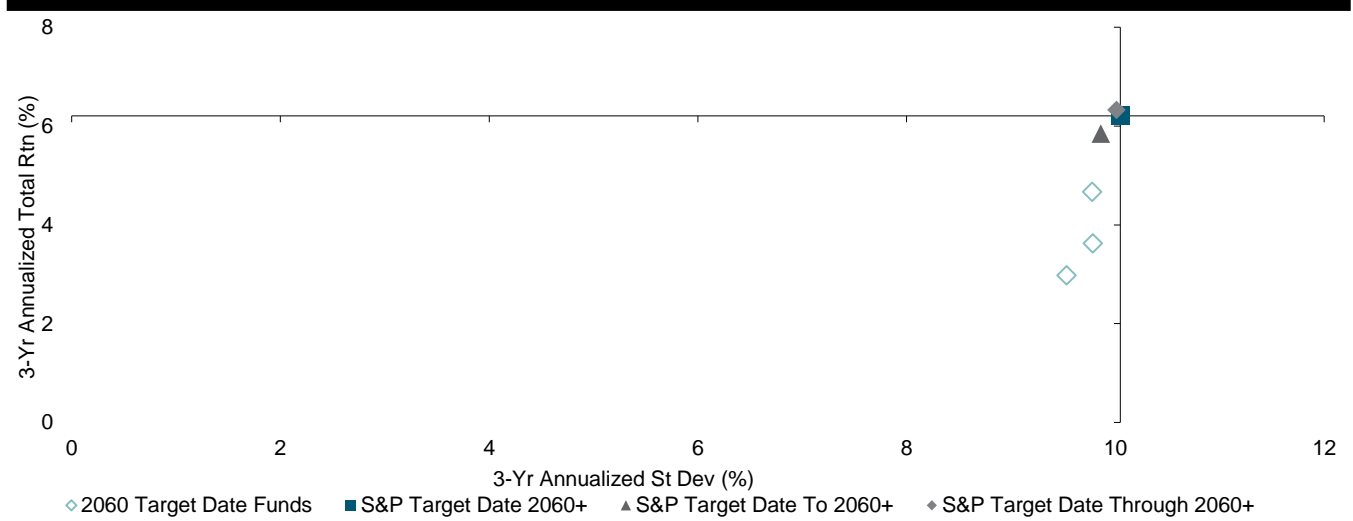
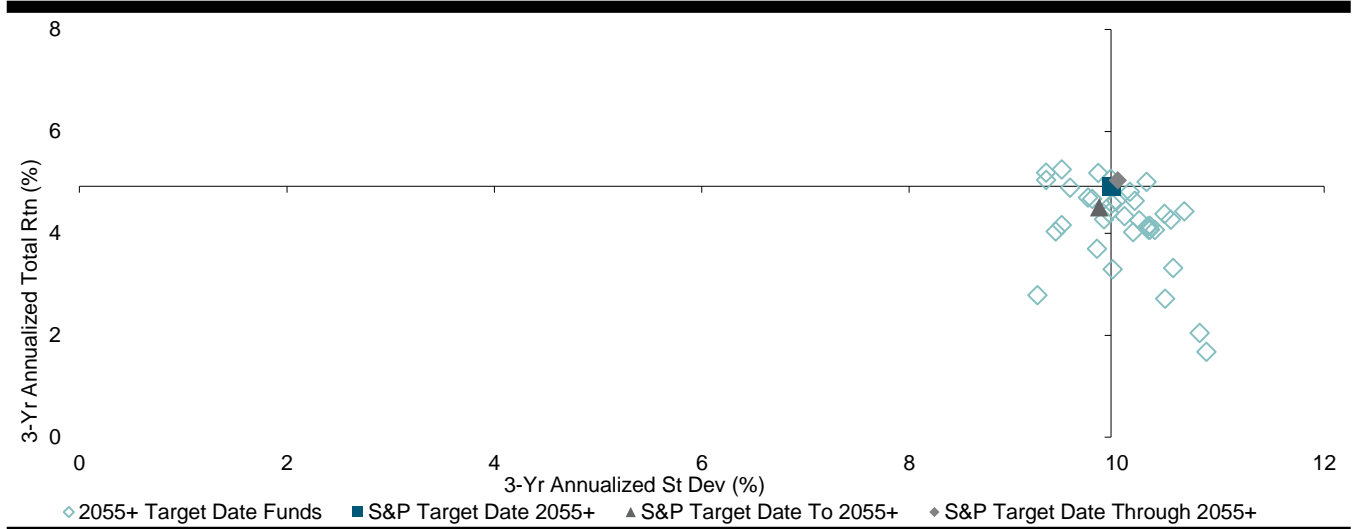
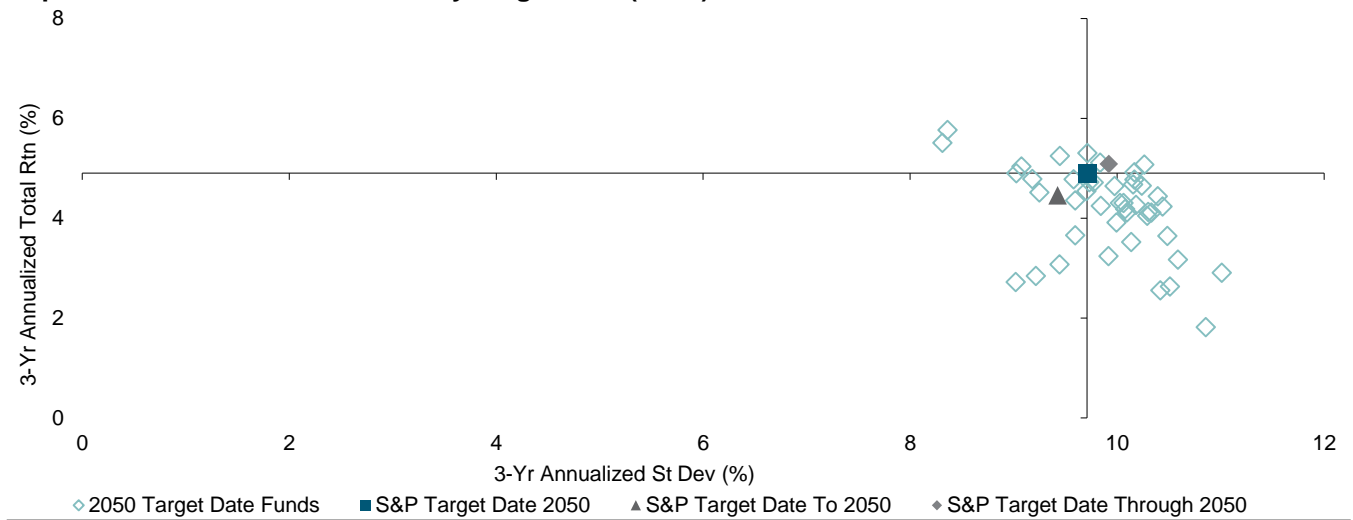
Source: S&P Dow Jones Indices LLC, Morningstar Direct. Data as of Dec. 30, 2016. Charts are provided for illustrative purposes. Past performance is no guarantee of future results.

Report 6: Three-Year Risk/Return by Target Date (cont.)



Source: S&P Dow Jones Indices LLC, Morningstar Direct. Data as of Dec. 30, 2016. Charts are provided for illustrative purposes. Past performance is no guarantee of future results.

Report 6: Three-Year Risk/Return by Target Date (cont.)



Source: S&P Dow Jones Indices LLC, Morningstar Direct. Data as of Dec. 30, 2016. Charts are provided for illustrative purposes. Past performance is no guarantee of future results.

GENERAL DISCLAIMER

Copyright © 2017 by S&P Dow Jones Indices LLC, a part of S&P Global. All rights reserved. Standard & Poor's®, S&P 500® and S&P® are registered trademarks of Standard & Poor's Financial Services LLC ("S&P"), a subsidiary of S&P Global. Dow Jones® is a registered trademark of Dow Jones Trademark Holdings LLC ("Dow Jones"). Trademarks have been licensed to S&P Dow Jones Indices LLC. Redistribution, reproduction and/or photocopying in whole or in part are prohibited without written permission. This document does not constitute an offer of services in jurisdictions where S&P Dow Jones Indices LLC, Dow Jones, S&P or their respective affiliates (collectively "S&P Dow Jones Indices") do not have the necessary licenses. All information provided by S&P Dow Jones Indices is impersonal and not tailored to the needs of any person, entity or group of persons. S&P Dow Jones Indices receives compensation in connection with licensing its indices to third parties. Past performance of an index is not a guarantee of future results.

It is not possible to invest directly in an index. Exposure to an asset class represented by an index is available through investable instruments based on that index. S&P Dow Jones Indices does not sponsor, endorse, sell, promote or manage any investment fund or other investment vehicle that is offered by third parties and that seeks to provide an investment return based on the performance of any index. S&P Dow Jones Indices makes no assurance that investment products based on the index will accurately track index performance or provide positive investment returns. S&P Dow Jones Indices LLC is not an investment advisor, and S&P Dow Jones Indices makes no representation regarding the advisability of investing in any such investment fund or other investment vehicle. A decision to invest in any such investment fund or other investment vehicle should not be made in reliance on any of the statements set forth in this document. Prospective investors are advised to make an investment in any such fund or other vehicle only after carefully considering the risks associated with investing in such funds, as detailed in an offering memorandum or similar document that is prepared by or on behalf of the issuer of the investment fund or other vehicle. Inclusion of a security within an index is not a recommendation by S&P Dow Jones Indices to buy, sell, or hold such security, nor is it considered to be investment advice.

These materials have been prepared solely for informational purposes based upon information generally available to the public and from sources believed to be reliable. No content contained in these materials (including index data, ratings, credit-related analyses and data, research, valuations, model, software or other application or output therefrom) or any part thereof (Content) may be modified, reverse-engineered, reproduced or distributed in any form or by any means, or stored in a database or retrieval system, without the prior written permission of S&P Dow Jones Indices. The Content shall not be used for any unlawful or unauthorized purposes. S&P Dow Jones Indices and its third-party data providers and licensors (collectively "S&P Dow Jones Indices Parties") do not guarantee the accuracy, completeness, timeliness or availability of the Content. S&P Dow Jones Indices Parties are not responsible for any errors or omissions, regardless of the cause, for the results obtained from the use of the Content. THE CONTENT IS PROVIDED ON AN "AS IS" BASIS. S&P DOW JONES INDICES PARTIES DISCLAIM ANY AND ALL EXPRESS OR IMPLIED WARRANTIES, INCLUDING, BUT NOT LIMITED TO, ANY WARRANTIES OF MERCHANTABILITY OR FITNESS FOR A PARTICULAR PURPOSE OR USE, FREEDOM FROM BUGS, SOFTWARE ERRORS OR DEFECTS, THAT THE CONTENT'S FUNCTIONING WILL BE UNINTERRUPTED OR THAT THE CONTENT WILL OPERATE WITH ANY SOFTWARE OR HARDWARE CONFIGURATION. In no event shall S&P Dow Jones Indices Parties be liable to any party for any direct, indirect, incidental, exemplary, compensatory, punitive, special or consequential damages, costs, expenses, legal fees, or losses (including, without limitation, lost income or lost profits and opportunity costs) in connection with any use of the Content even if advised of the possibility of such damages.

S&P Dow Jones Indices keeps certain activities of its business units separate from each other in order to preserve the independence and objectivity of their respective activities. As a result, certain business units of S&P Dow Jones Indices may have information that is not available to other business units. S&P Dow Jones Indices has established policies and procedures to maintain the confidentiality of certain non-public information received in connection with each analytical process.

In addition, S&P Dow Jones Indices provides a wide range of services to, or relating to, many organizations, including issuers of securities, investment advisers, broker-dealers, investment banks, other financial institutions and financial intermediaries, and accordingly may receive fees or other economic benefits from those organizations, including organizations whose securities or services they may recommend, rate, include in model portfolios, evaluate or otherwise address.