

RESEARCH

CONTRIBUTORS

Fei Mei Chan

Director

Index Investment Strategy

feimei.chan@spglobal.com

Craig J. Lazzara, CFA

Managing Director

Index Investment Strategy

craig.lazzara@spglobal.com

The Dispersion-Correlation Map

“All happy families are alike; every unhappy family is unhappy in its own way”

– Tolstoy, *Anna Karenina*

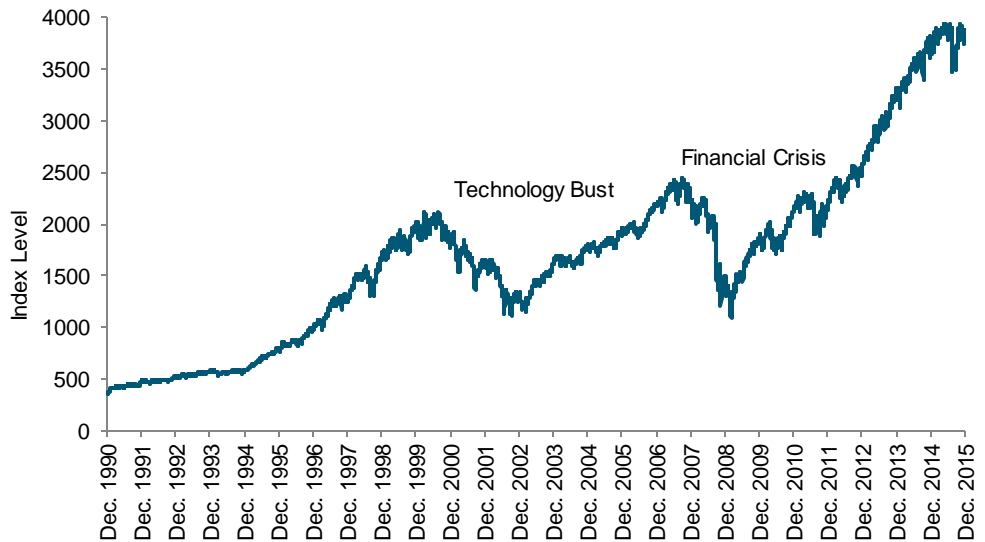
EXECUTIVE SUMMARY

- In the past two decades, equities have gone through two major bear markets: the bursting of the technology bubble in 2000-2002 and the financial crisis of 2008.
- Although the two events seem superficially similar, the nature of the market’s volatility was quite different in 2008 relative to 2000-2002.
- We introduce the dispersion-correlation map as a heuristic for understanding market volatility.
- All bear markets are unpleasant, but 2008 was especially so, given the very high correlations among equity securities.
- Today’s environment shows no resemblance to either of the past two bear market episodes.

CONTEXT

Over the past 25 years, the [S&P 500[®]](#) has returned a cumulative 940% (10% annually). However, the market’s climb was not a steady one (see Exhibit 1). Since 1991, equities have gone through two major bear markets: the bursting of the technology bubble in 2000-2002 and the financial crisis of 2007-2008. The S&P 500 declined 38% in calendar years 2000-2002 and 37% in 2008 alone.

Exhibit 1: S&P 500 (TR) Performance

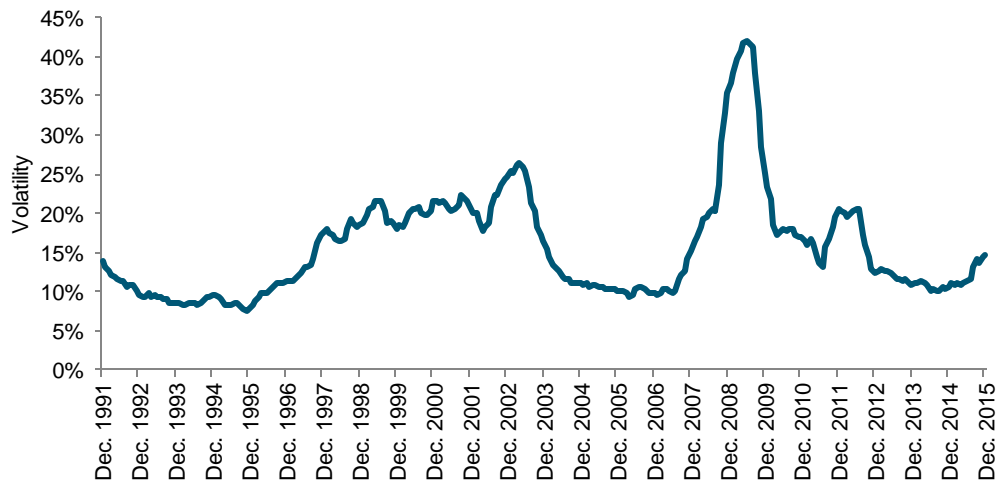


Source: S&P Dow Jones Indices LLC. Data from Dec. 31, 1990, through Dec. 31, 2015. Index performance based on total return [USD]. Charts are provided for illustrative. It is not possible to invest directly in an index. Past performance is no guarantee of future results.

A future analyst might look back at the technology bust and the 2008 financial crisis and conclude they were essentially the same.

These two events seem superficially similar, starting with the magnitude of the decline. Both were major distresses following sustained gains in the S&P 500, and in both cases volatility rose (see Exhibit 2).¹ **It's not hard to imagine a young analyst, 50 years from now, looking at both episodes and concluding that they were essentially the same. But he would be wrong.**

Exhibit 2: S&P 500 Rolling 12-Month Average Volatility



Source: S&P Dow Jones Indices LLC. Data from Dec. 31, 1990, through Dec. 31, 2015. Past performance is no guarantee of future results. Chart is provided for illustrative purposes.

¹ Volatility and returns are inversely related, at least in the short run. See Edwards, Tim and Craig J. Lazzara, "[The Landscape of Risk](#)," December 2014.

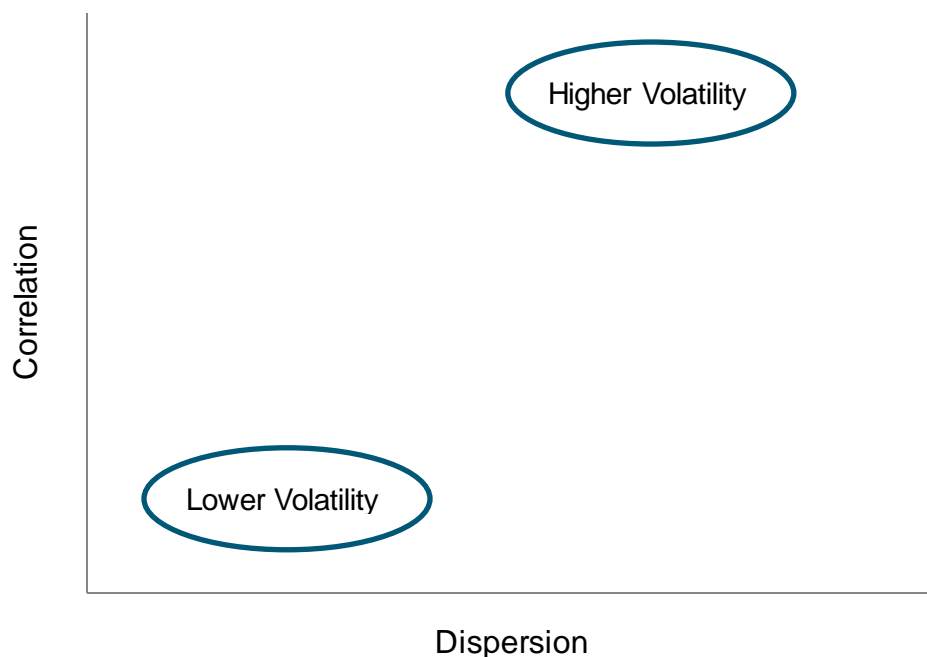
A TALE OF TWO CRISES

What our putative analyst missed is that the *nature* of the market's volatility was quite different in 2008 compared with 2000-2002. More specifically, the deflation of the technology bubble was accompanied by the highest equity dispersion ever seen and below-average correlations. The 2008 global financial crisis saw above-average dispersion but with very high correlations.

Exhibit 3 illustrates the basic framework, which we call a dispersion-correlation map. Correlation is a measure of timing—it tells us whether the components of an index move in the same direction at the same time. Dispersion is a measure of magnitude. It tells us by how much the return of the average stock differs from the overall market's return.² If a market's tendency for co-movement (correlation) is constant, but the magnitude of individual stocks' fluctuations (dispersion) rises, market volatility will rise. Similarly, if the tendency for co-movement increases, then even with constant dispersion, market volatility will rise.³

Correlation is a measure of timing and dispersion is a measure of magnitude.

Exhibit 3: Dispersion-Correlation Map



Source: S&P Dow Jones Indices. Chart is provided for illustrative purposes.

Whether correlation and dispersion are *sources* of volatility, or *manifestations* of volatility, is an interesting philosophical question.⁴ What

² Edwards, Tim and Craig J. Lazzara, "[Dispersion: Measuring Market Opportunity](#)," December 2013.

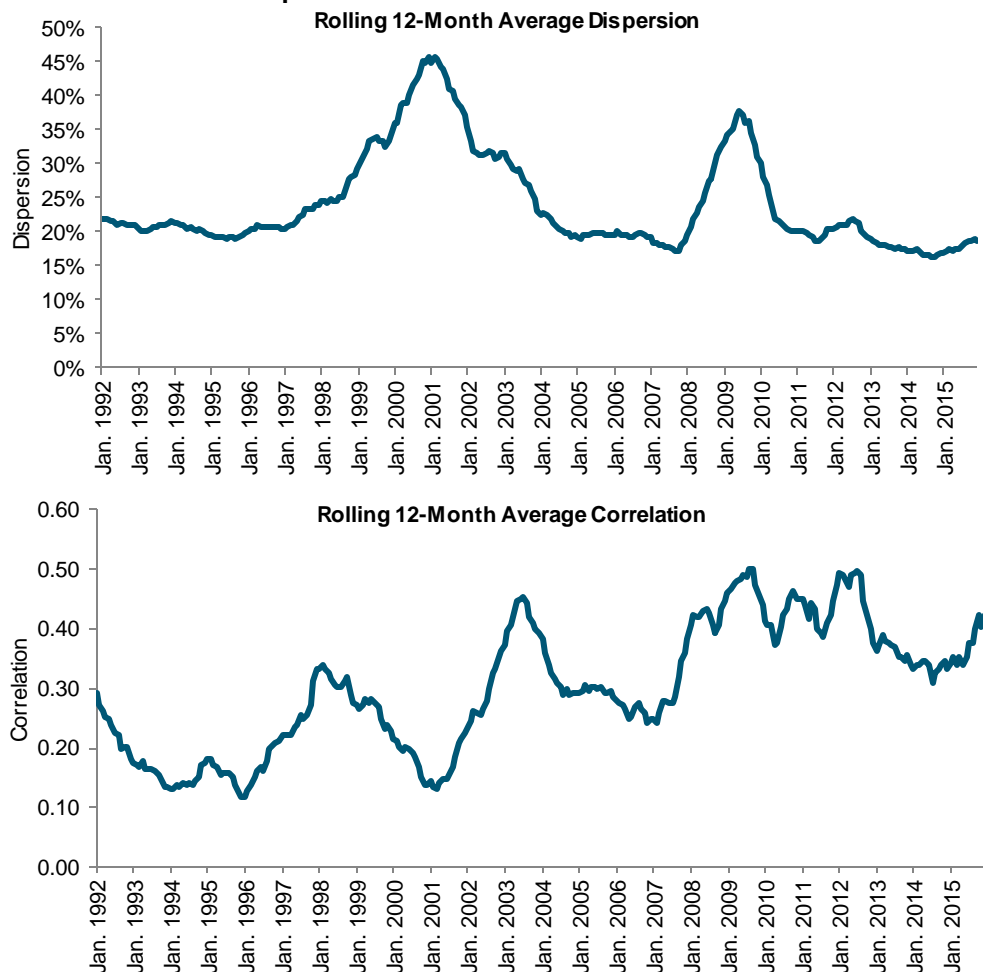
³ Edwards, Tim and Craig J. Lazzara, "[At the Intersection of Diversification, Volatility and Correlation](#)," April 2014. Note that, for these purposes, correlation measures the average correlation of each stock in an index with every other stock in the index.

⁴ In the same vein, are the sides of a right triangle the *source* of the hypotenuse or a *manifestation* of the hypotenuse (and its adjacent angles)? This is another philosophical question that need not detain us here.

is important for our purposes is to understand that in a dispersion-correlation map like Exhibit 3, **points close to the origin are associated with lower volatility, and points farther from the origin are associated with higher volatility.** One empirical confirmation of this relationship can be found in the cross-sectional volatility of the [sectors](#) of the S&P 500.⁵

We can also find evidence for this relationship by examining time series data. Exhibit 4 graphs dispersion and correlation for the S&P 500 on a rolling 12-month basis (corresponding to the graph of S&P 500 volatility in Exhibit 2). Notice that dispersion tends to run in a fairly narrow channel (between roughly 20% and 25% at annual rates) except during two significant exceptions around the time of the technology bubble and the financial crisis. Correlation tends to fluctuate more and appears to have drifted upward since the lows of the 1990s.

Exhibit 4: S&P 500 Dispersion and Correlation



Correlation tends to fluctuate more and appears to have drifted upward since the lows of the 1990s.

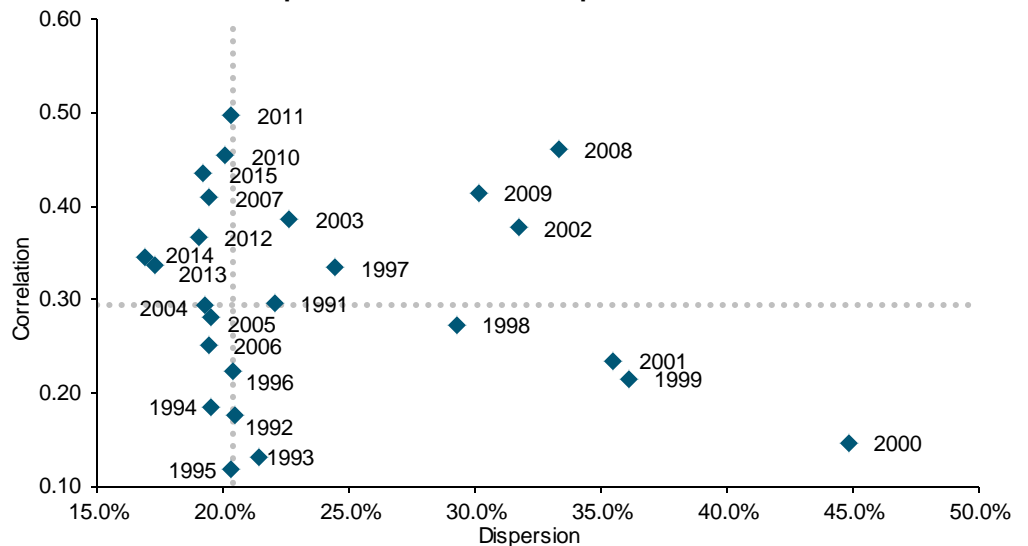
Source: S&P Dow Jones Indices LLC. Data from Dec. 31, 1990, through Dec. 31, 2015. Past performance is no guarantee of future results. Charts are provided for illustrative.

⁵ Bennett, Chris and Craig J. Lazzara, "[Some Implications of Sector Dispersion](#)," April 2015.

Exhibit 5 gathers the data of Exhibit 4 into annual averages to form a dispersion-correlation map. Each point on the map represents the average of 12 monthly dispersion and correlation observations for the year in question. (The dotted lines simply show us the median levels of dispersion and correlation.) Given what we observed in Exhibit 4, it's not surprising that dispersion in most years hovers around 20%. However, there are two major exceptions to this tendency.

In the lower right quadrant of Exhibit 5, we find 1998, 1999, 2000, and 2001: the center of the inflation and deflation of the technology bubble. Dispersion in those years was extremely high, but correlation was well below average. In the upper right quadrant is 2008: a period of well-above average dispersion and very high correlations.

Exhibit 5: S&P 500 Dispersion-Correlation Map



Source: S&P Dow Jones Indices LLC. Data from Dec. 31, 1990, through Dec. 31, 2015. Past performance is no guarantee of future results. Chart is provided for illustrative purposes.

WHY THIS MATTERS

All bear markets are unpleasant, but those of the 2008 variety are especially so. The difficulty comes from 2008's elevated correlations, which tell us that there was considerable co-movement among S&P 500 components. In 2000-2002, in contrast, correlations were dramatically lower, suggesting a below-average tendency toward co-movement. Furthermore, 2000-2002's elevated dispersion tells us that there was a large gap between the best and the worst performers.

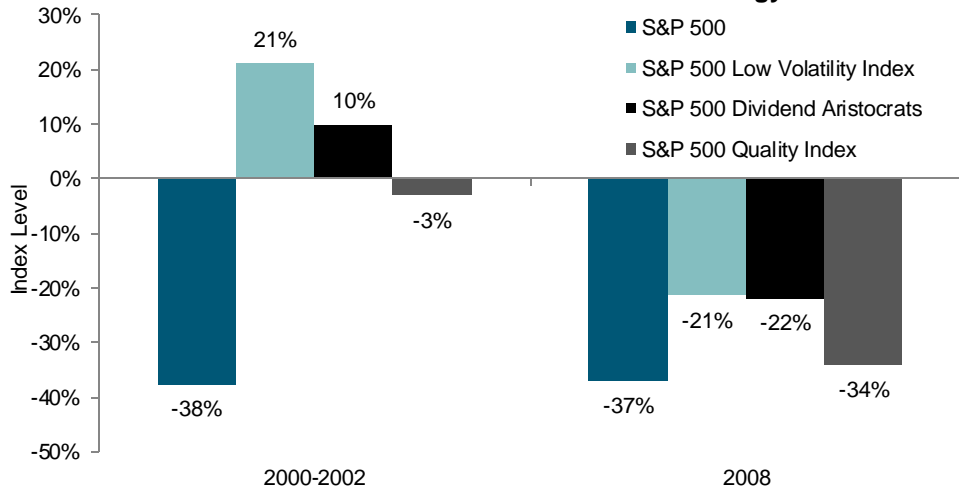
In a bear market of the 2000-2002 type, there are potentially places for an investor to hide. Below-average co-movement suggests that not all stocks were declining, and very high dispersion tells us that there was considerable room to add value relative to the market's average performance. **In 2008, the degree of co-movement left less latitude for defensive strategies to succeed.**

All bear markets are unpleasant, but those of the 2008 variety are especially so.

Exhibit 6a, which compares the results of several such strategies during both periods, illustrates this point. In 2000-2002, despite the S&P 500's -38% decline, at least some strategies achieved a positive total return. In 2008, on the other hand, the tendency for all stocks to move together (in this case, downward together) was much stronger. The higher dispersion in the earlier period means that the spread between defensive strategy returns and those of the S&P 500 was much greater than during the 2008 crisis (see Exhibit 6b).⁶

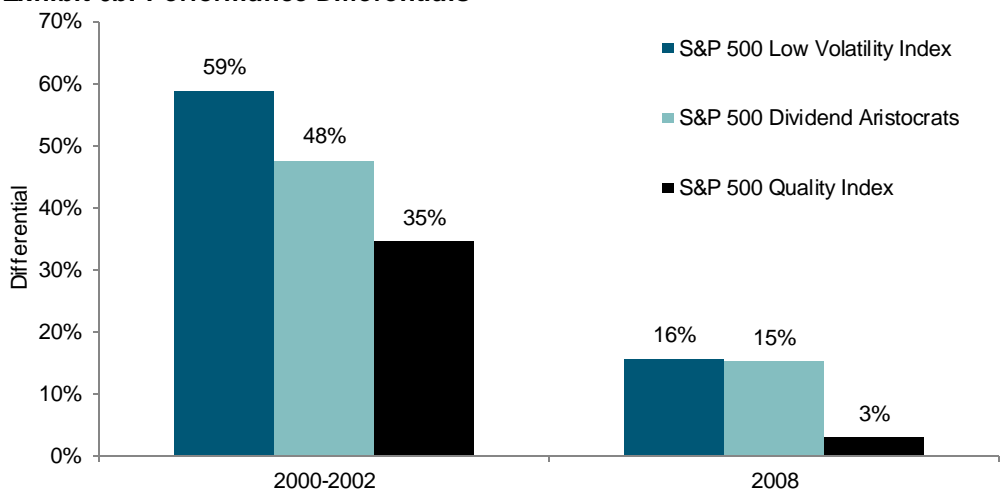
The spread between defensive strategy returns and those of the S&P 500 was much greater in 2000-2002 than during the 2008 financial crisis.

Exhibit 6a: Performance of the S&P 500 and S&P 500 Strategy Indices



Source: S&P Dow Jones Indices LLC. Data from Dec. 31, 1999, through Dec. 31, 2002, and Dec. 31, 2007, through Dec. 31, 2008. Past performance is no guarantee of future results. Chart is provided for illustrative purposes and reflects hypothetical historical performance. Please see the Performance Disclosure at the end of the document for more information regarding the inherent limitations associated with back-tested performance.

Exhibit 6b: Performance Differentials

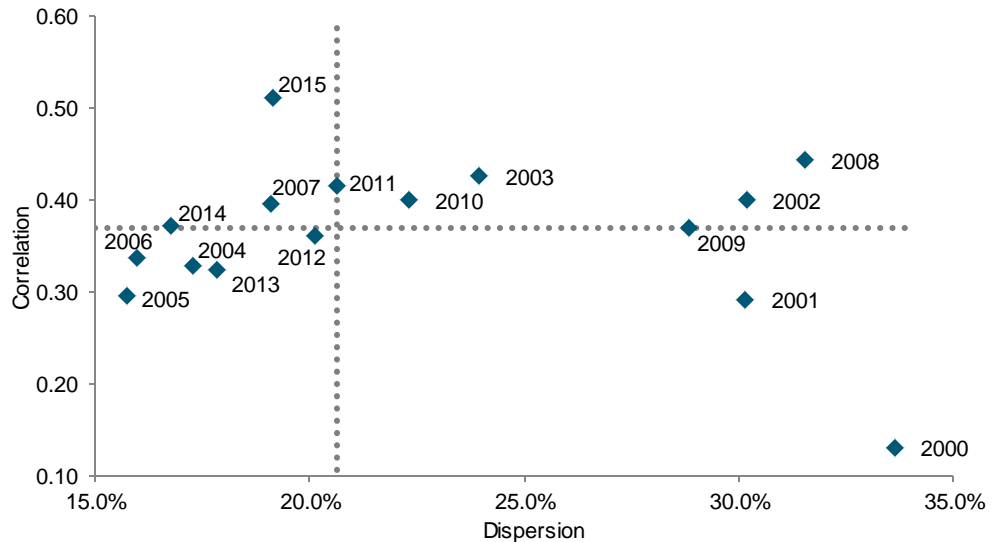


Source: S&P Dow Jones Indices LLC. Data from Dec. 31, 1999, through Dec. 31, 2002, and Dec. 31, 2007, through Dec. 31, 2008. Past performance is no guarantee of future results. Chart is provided for illustrative purposes and reflects hypothetical historical performance. Please see the Performance Disclosure at the end of the document for more information regarding the inherent limitations associated with back-tested performance.

⁶ Chan, Fei Mei and Craig J. Lazzara, "Gauging Differential Returns," January 2014.

Importantly, we can observe similar effects in equity markets outside the U.S. Exhibit 7 plots dispersion and correlation for the [S&P Europe 350](#) (albeit for a shorter period). Although not identical to the U.S. pattern, 2000-2002 was a period of below-average correlation and very high dispersion; 2008 showed much higher correlations.

Exhibit 7: S&P Europe 350 Dispersion-Correlation Map



Source: S&P Dow Jones Indices LLC. Data from Dec. 31, 1999, through Dec. 31, 2015. Past performance is no guarantee of future results. Chart is provided for illustrative purposes.

The correlation-dispersion map of the S&P 500 provides historical context for today's market dynamics.

We see similar patterns in Canada as well as Asia (see Appendix). The Asian narrative, however, also includes the regional financial crisis of 1997-1998. The average correlation in Asia for 1998 was even higher than in 2008.

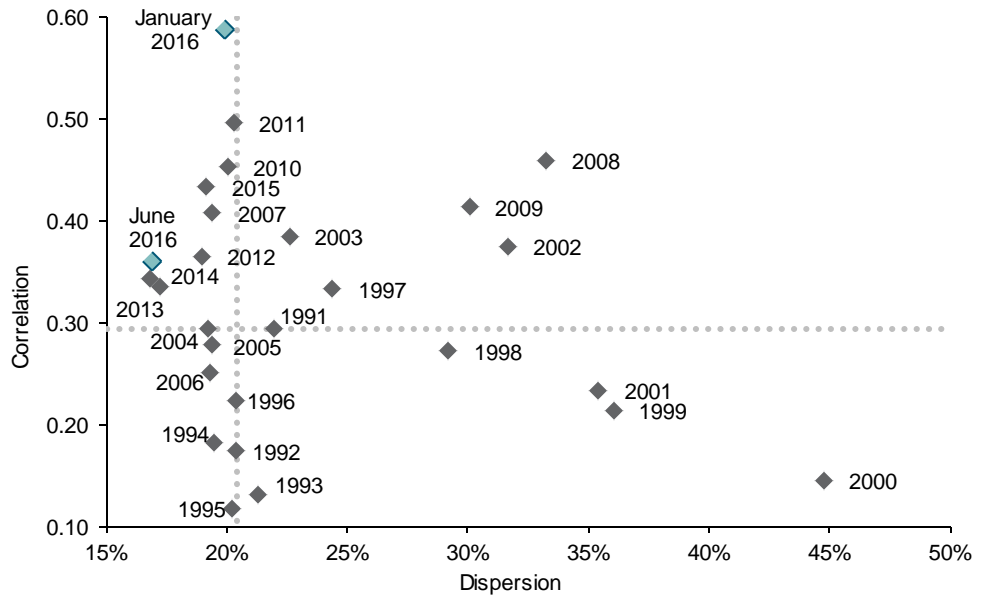
WHERE ARE WE NOW?

This analysis may be of more than just historical interest. Market volatility is unavoidable, but understanding how dispersion and correlation have interacted can sometimes provide actionable current insight. Specifically, we have seen what the historical dispersion-correlation profiles of bear markets look like. What happens when we compare contemporary data to those profiles?

As of May 2016, correlations had dropped and dispersion had declined significantly in comparison with January 2016.

Exhibit 8 shows that at the beginning of 2016, U.S. equity correlations were very high, with dispersion at about median level. Historically, we have seen that high correlation can be worrisome; even without elevated dispersion, the S&P 500 looked potentially fragile at the beginning of this year. That fragility was manifested in January 2016's 5% decline for the S&P 500. Since that decline, however, the index's internal dynamics have shifted considerably. As of May 31, 2016, correlations had dropped dramatically and stood only slightly above their median level, and dispersion had also declined significantly.

Exhibit 8: S&P 500 Dispersion-Correlation Map



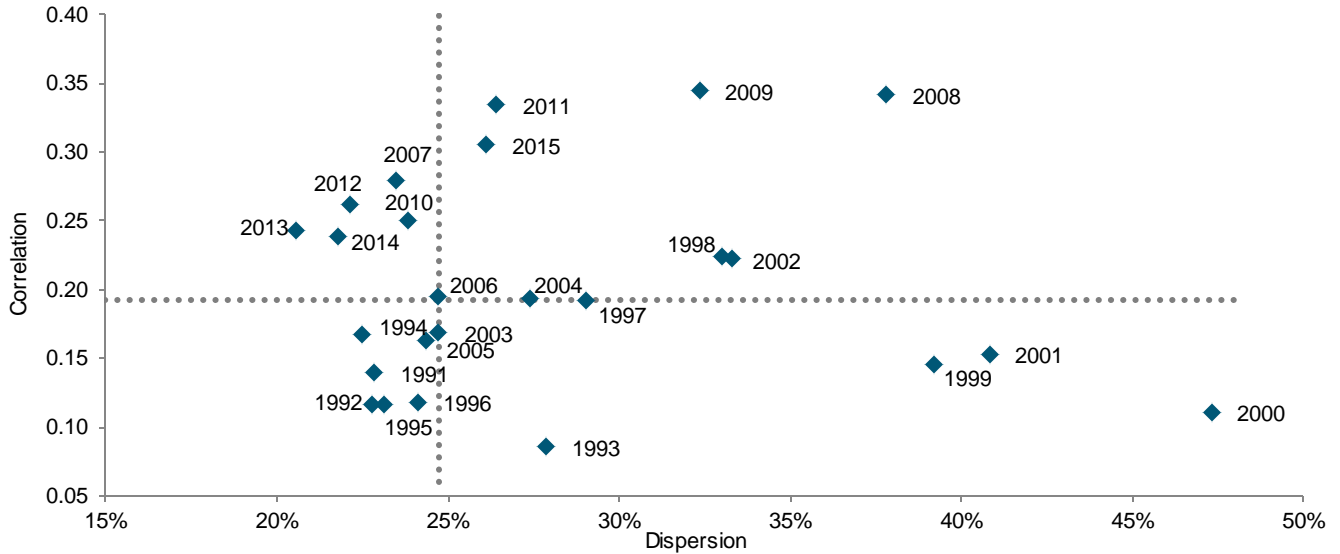
Source: S&P Dow Jones Indices LLC. Data from Dec. 31, 1990, through May 31, 2016. Past performance is no guarantee of future results. Chart is provided for illustrative purposes.

We make no claims of market timing prescience based on the dispersion-correlation map, but Exhibit 8 does provide historical context for the market’s current dynamics. January 2016’s 5% decline *might* have signaled the start of an extended market decline. If that had occurred, and if historical precedents had prevailed, the index would have moved to the right on the dispersion-correlation map.

But it didn’t. **The market’s volatility was resolved in a relatively benign way**—correlations fell, dispersion declined, and six months later we find the index in a very different position on the dispersion-correlation map. In that sense, this analysis may provide some comfort to nervous investors.

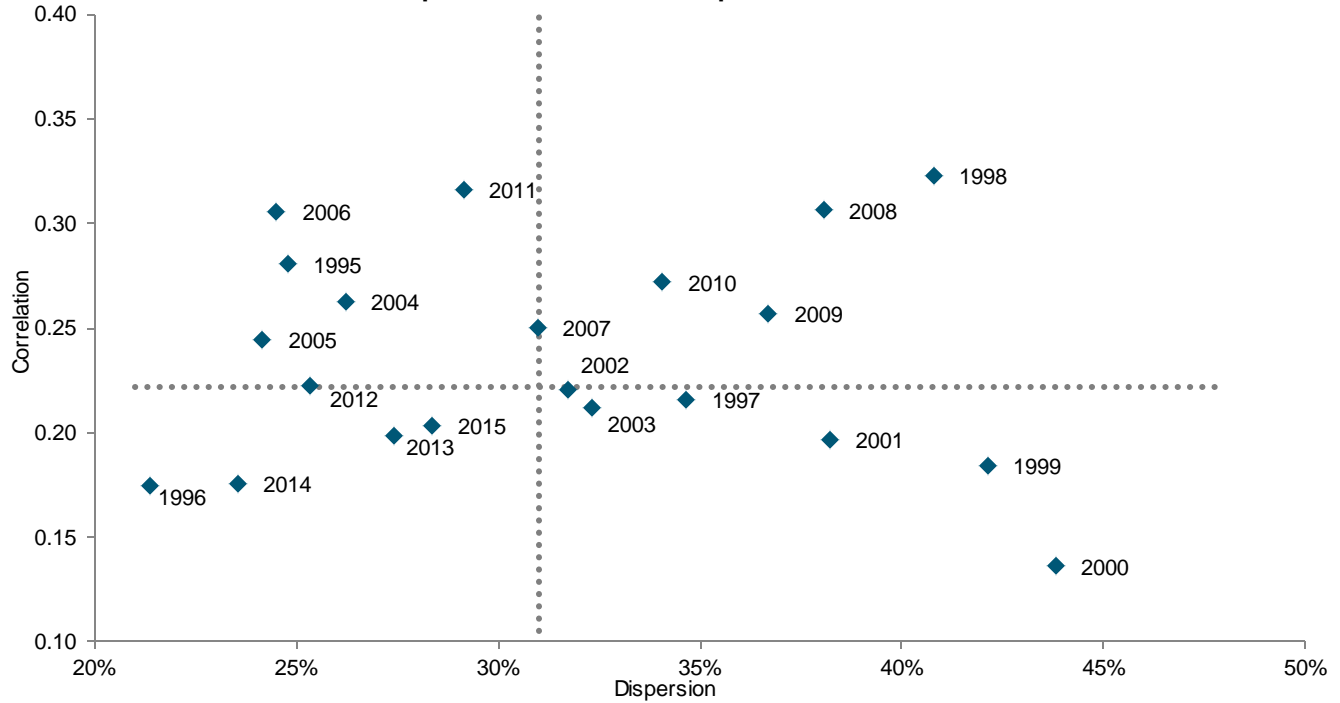
APPENDIX

Exhibit 9: S&P/TSX Composite Dispersion-Correlation Map



Source: S&P Dow Jones Indices LLC. Data from Dec. 31, 1990, through Dec. 31, 2015. Past performance is no guarantee of future results. Chart is provided for illustrative purposes.

Exhibit 10: S&P Pan Asia BMI Dispersion-Correlation Map



Source: S&P Dow Jones Indices LLC. Data from Dec. 31, 1994, through Dec. 31, 2015. Past performance is no guarantee of future results. Chart is provided for illustrative purposes.

ABOUT S&P DOW JONES INDICES

S&P Dow Jones Indices LLC, a division of S&P Global, is the world's largest, global resource for index-based concepts, data and research. Home to iconic financial market indicators, such as the S&P 500[®] and the Dow Jones Industrial Average[™], S&P Dow Jones Indices LLC has over 115 years of experience constructing innovative and transparent solutions that fulfill the needs of institutional and retail investors. More assets are invested in products based upon our indices than any other provider in the world. With over 1,000,000 indices covering a wide range of assets classes across the globe, S&P Dow Jones Indices LLC defines the way investors measure and trade the markets. To learn more about our company, please visit www.spdji.com.

PERFORMANCE DISCLOSURE

The S&P 500 Low Volatility Index was launched April 4, 2011. The S&P 500 Dividend Aristocrats was launched May 2, 2005. The S&P 500 Quality Index was launched July 8, 2014. All information presented prior to an index's Launch Date is hypothetical (back-tested), not actual performance. The back-test calculations are based on the same methodology that was in effect on the index Launch Date. Complete index methodology details are available at www.spdji.com.

S&P Dow Jones Indices defines various dates to assist our clients in providing transparency. The First Value Date is the first day for which there is a calculated value (either live or back-tested) for a given index. The Base Date is the date at which the Index is set at a fixed value for calculation purposes. The Launch Date designates the date upon which the values of an index are first considered live: index values provided for any date or time period prior to the index's Launch Date are considered back-tested. S&P Dow Jones Indices defines the Launch Date as the date by which the values of an index are known to have been released to the public, for example via the company's public website or its datafeed to external parties. For Dow Jones-branded indices introduced prior to May 31, 2013, the Launch Date (which prior to May 31, 2013, was termed "Date of introduction") is set at a date upon which no further changes were permitted to be made to the index methodology, but that may have been prior to the Index's public release date.

Past performance of the Index is not an indication of future results. Prospective application of the methodology used to construct the Index may not result in performance commensurate with the back-test returns shown. The back-test period does not necessarily correspond to the entire available history of the Index. Please refer to the methodology paper for the Index, available at www.spdji.com for more details about the index, including the manner in which it is rebalanced, the timing of such rebalancing, criteria for additions and deletions, as well as all index calculations.

Another limitation of using back-tested information is that the back-tested calculation is generally prepared with the benefit of hindsight. Back-tested information reflects the application of the index methodology and selection of index constituents in hindsight. No hypothetical record can completely account for the impact of financial risk in actual trading. For example, there are numerous factors related to the equities, fixed income, or commodities markets in general which cannot be, and have not been accounted for in the preparation of the index information set forth, all of which can affect actual performance.

The Index returns show do not represent the results of actual trading of investable assets/securities. S&P Dow Jones Indices LLC maintains the Index and calculates the Index levels and performance shown or discussed, but does not manage actual assets. Index returns do not reflect payment of any sales charges or fees an investor may pay to purchase the securities underlying the Index or investment funds that are intended to track the performance of the Index. The imposition of these fees and charges would cause actual and back-tested performance of the securities/fund to be lower than the Index performance shown. As a simple example, if an index returned 10% on a US \$100,000 investment for a 12-month period (or US \$10,000) and an actual asset-based fee of 1.5% was imposed at the end of the period on the investment plus accrued interest (or US \$1,650), the net return would be 8.35% (or US \$8,350) for the year. Over a three year period, an annual 1.5% fee taken at year end with an assumed 10% return per year would result in a cumulative gross return of 33.10%, a total fee of US \$5,375, and a cumulative net return of 27.2% (or US \$27,200).

GENERAL DISCLAIMER

© 2016 S&P Dow Jones Indices LLC, a division of S&P Global. All rights reserved. S&P, SPDR and S&P 500 are registered trademarks of Standard & Poor's Financial Services LLC, a division of S&P Global ("S&P"). DOW JONES is a registered trademark of Dow Jones Trademark Holdings LLC ("Dow Jones"). These trademarks together with others have been licensed to S&P Dow Jones Indices LLC. Redistribution, reproduction and/or photocopying in whole or in part are prohibited without written permission. This document does not constitute an offer of services in jurisdictions where S&P Dow Jones Indices LLC, Dow Jones, S&P or their respective affiliates (collectively "S&P Dow Jones Indices") do not have the necessary licenses. All information provided by S&P Dow Jones Indices is impersonal and not tailored to the needs of any person, entity or group of persons. S&P Dow Jones Indices receives compensation in connection with licensing its indices to third parties. Past performance of an index is not a guarantee of future results.

It is not possible to invest directly in an index. Exposure to an asset class represented by an index is available through investable instruments based on that index. S&P Dow Jones Indices does not sponsor, endorse, sell, promote or manage any investment fund or other investment vehicle that is offered by third parties and that seeks to provide an investment return based on the performance of any index. S&P Dow Jones Indices makes no assurance that investment products based on the index will accurately track index performance or provide positive investment returns. S&P Dow Jones Indices LLC is not an investment advisor, and S&P Dow Jones Indices makes no representation regarding the advisability of investing in any such investment fund or other investment vehicle. A decision to invest in any such investment fund or other investment vehicle should not be made in reliance on any of the statements set forth in this document. Prospective investors are advised to make an investment in any such fund or other vehicle only after carefully considering the risks associated with investing in such funds, as detailed in an offering memorandum or similar document that is prepared by or on behalf of the issuer of the investment fund or other investment product or vehicle. S&P Dow Jones Indices LLC is not a tax advisor. A tax advisor should be consulted to evaluate the impact of any tax-exempt securities on portfolios and the tax consequences of making any particular investment decision. Inclusion of a security within an index is not a recommendation by S&P Dow Jones Indices to buy, sell, or hold such security, nor is it considered to be investment advice. Closing prices for S&P Dow Jones Indices' US benchmark indices are calculated by S&P Dow Jones Indices based on the closing price of the individual constituents of the index as set by their primary exchange. Closing prices are received by S&P Dow Jones Indices from one of its third party vendors and verified by comparing them with prices from an alternative vendor. The vendors receive the closing price from the primary exchanges. Real-time intraday prices are calculated similarly without a second verification.

These materials have been prepared solely for informational purposes based upon information generally available to the public and from sources believed to be reliable. No content contained in these materials (including index data, ratings, credit-related analyses and data, research, valuations, model, software or other application or output therefrom) or any part thereof ("Content") may be modified, reverse-engineered, reproduced or distributed in any form or by any means, or stored in a database or retrieval system, without the prior written permission of S&P Dow Jones Indices. The Content shall not be used for any unlawful or unauthorized purposes. S&P Dow Jones Indices and its third-party data providers and licensors (collectively "S&P Dow Jones Indices Parties") do not guarantee the accuracy, completeness, timeliness or availability of the Content. S&P Dow Jones Indices Parties are not responsible for any errors or omissions, regardless of the cause, for the results obtained from the use of the Content. THE CONTENT IS PROVIDED ON AN "AS IS" BASIS. S&P DOW JONES INDICES PARTIES DISCLAIM ANY AND ALL EXPRESS OR IMPLIED WARRANTIES, INCLUDING, BUT NOT LIMITED TO, ANY WARRANTIES OF MERCHANTABILITY OR FITNESS FOR A PARTICULAR PURPOSE OR USE, FREEDOM FROM ERRORS OR DEFECTS. In no event shall S&P Dow Jones Indices Parties be liable to any party for any direct, indirect, incidental, exemplary, compensatory, punitive, special or consequential damages, costs, expenses, legal fees, or losses (including, without limitation, lost income or lost profits and opportunity costs) in connection with any use of the Content even if advised of the possibility of such damages.

Credit-related information and other analyses, including ratings, research and valuations are generally provided by licensors and/or affiliates of S&P Dow Jones Indices, including but not limited to S&P Global's other divisions such as Standard & Poor's Financial Services LLC and S&P Capital IQ LLC. Any credit-related information and other related analyses and statements in the Content are statements of opinion as of the date they are expressed and not statements of fact. Any opinion, analyses and rating acknowledgment decisions are not recommendations to purchase, hold, or sell any securities or to make any investment decisions, and do not address the suitability of any security. S&P Dow Jones Indices does not assume any obligation to update the Content following publication in any form or format. The Content should not be relied on and is not a substitute for the skill, judgment and experience of the user, its management, employees, advisors and/or clients when making investment and other business decisions. S&P Dow Jones Indices LLC does not act as a fiduciary or an investment advisor. While S&P Dow Jones Indices has obtained information from sources they believe to be reliable, S&P Dow Jones Indices does not perform an audit or undertake any duty of due diligence or independent verification of any information it receives.

To the extent that regulatory authorities allow a rating agency to acknowledge in one jurisdiction a rating issued in another jurisdiction for certain regulatory purposes, S&P Global Ratings Services reserves the right to assign, withdraw or suspend such acknowledgement at any time and in its sole discretion. S&P Dow Jones Indices, including S&P Global Ratings Services, disclaim any duty whatsoever arising out of the assignment, withdrawal or suspension of an acknowledgement as well as any liability for any damage alleged to have been suffered on account thereof.

Affiliates of S&P Dow Jones Indices LLC, including S&P Global Ratings Services, may receive compensation for its ratings and certain credit-related analyses, normally from issuers or underwriters of securities or from obligors. Such affiliates of S&P Dow Jones Indices LLC, including S&P Global Ratings Services, reserve the right to disseminate its opinions and analyses. Public ratings and analyses from S&P Global Ratings Services are made available on its Web sites, www.standardandpoors.com (free of charge), and www.ratingsdirect.com and www.globalcreditportal.com (subscription), and may be distributed through other means, including via S&P Global Rating Services publications and third-party redistributors. Additional information about our ratings fees is available at www.standardandpoors.com/usratingsfees.

S&P Global keeps certain activities of its various divisions and business units separate from each other in order to preserve the independence and objectivity of their respective activities. As a result, certain divisions and business units of S&P Global may have information that is not available to other business units. S&P Global has established policies and procedures to maintain the confidentiality of certain non-public information received in connection with each analytical process.